

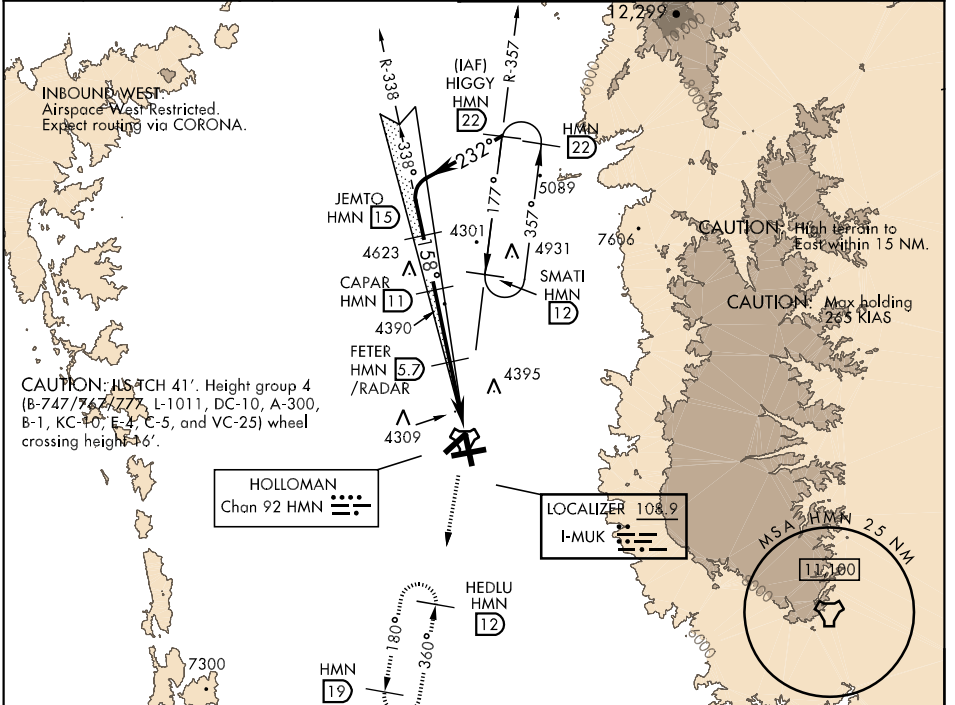
LOC I-MUK <b>108.9</b>	APCH CRS <b>158°</b>	Rwy ldg 12,132 THRE 4084 Arpt Elev 4094
---------------------------	-------------------------	---

AL-7 [USAF]

HOLLOMAN AFB (KHMN)

<p>▼ * When ALS inop, increase CAT ABCDE vis to ¾ mile. ** When ALS inop, increase CAT AB vis to 1 mile, CAT CDE vis to 1½ miles. *** Circling not authorized W of Rwy 16-34.</p>	<p>ALSF-1 <b>(A1)</b></p>	<p>MISSED APPROACH: Climb straight ahead to 7000, passing 4800 turn right and intercept HMN R-180 outbound to HEDLU and hold.</p>
---	-------------------------------	---

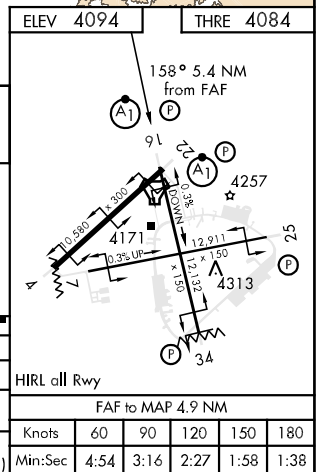
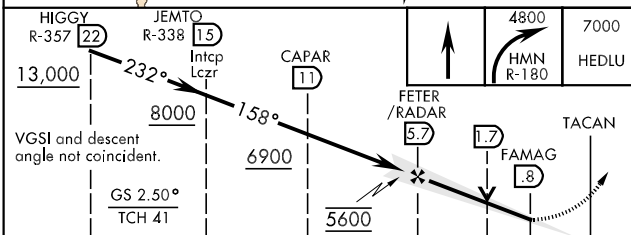
ATIS ★ <b>273.5</b>	ALBUQUERQUE CENTER <b>132.65 257.6</b>	HOLLOMAN APP CON <b>120.6 269.225</b>	HOLLOMAN TOWER ★ <b>119.3 255.9</b>	GND CON <b>127.05 275.8</b>	CLNC DEL <b>126.7 289.4</b>
------------------------	---	--	--	--------------------------------	--------------------------------



SW-1, 07 FEB 2013 to 07 MAR 2013

SW-1, 07 FEB 2013 to 07 MAR 2013

**RADAR or DME REQUIRED**  
EMERG SAFE ALT 100 NM 14,200



CATEGORY	A	B	C	D	E
S-ILS 16 *	4284-½		200	(200-½)	
S-LOC 16 **	4580-¾ 496 (500-¾)		4580-1 496 (500-1)		
CIRCLING ***	4640-1 546 (600-1)		4640-1½ 546 (600-1½)	4660-2 566 (600-2)	4760-2¼ 666 (700-2¼)

HIRL all Rwy					
FAF to MAP 4.9 NM					
Knots	60	90	120	150	180
Min:Sec	4:54	3:16	2:27	1:58	1:38