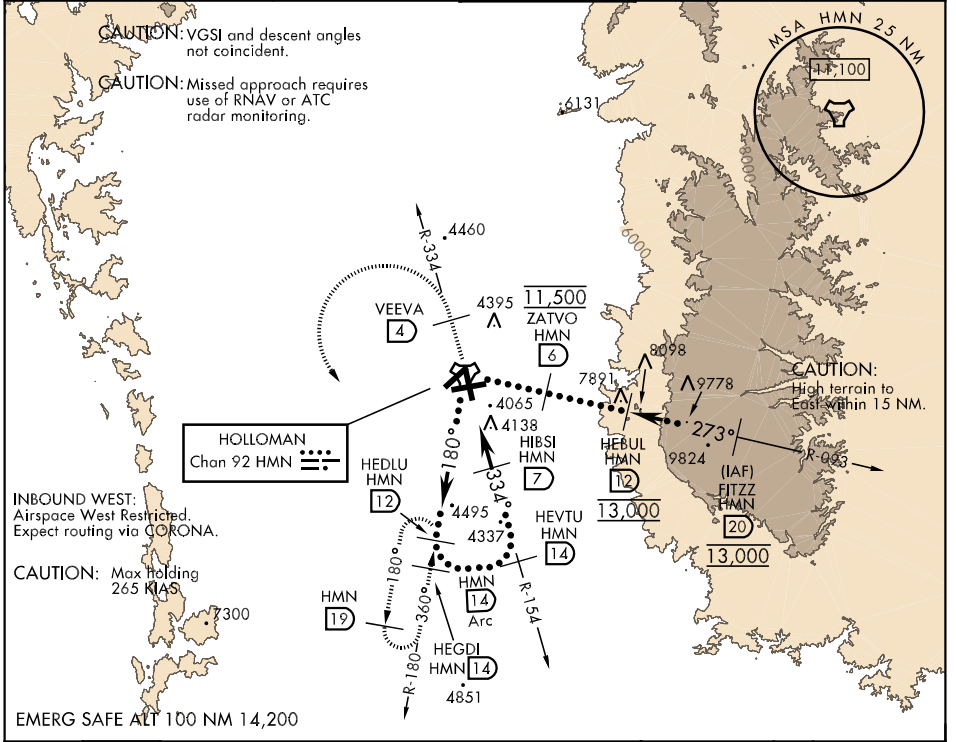


# HI-TACAN Z RWY 34

TACAN HMN Chan <b>92</b>	APCH CRS <b>334°</b>	Rwy Idg THRE <b>12,132</b> 4050 Arpt Elev <b>4094</b>	JAL-7 [USAF]	HOLLOMAN AFB (KHMM)
-----------------------------	-------------------------	--	--------------	---------------------

\* Circling not authorized W of Rwy 16-34. MISSED APPROACH: Climb to 7000, via HMN R-334, or VEEVA (4 DME) turn left and intercept HMN R-180 outbound to HEDLU and hold.

ATIS ★ <b>273.5</b>	ALBUQUERQUE CENTER <b>132.65 257.6</b>	HOLLOMAN APP CON <b>120.6 269.225</b>	HOLLOMAN TOWER ★ <b>119.3 255.9</b>	GND CON <b>127.05 275.8</b>	CLNC DEL <b>126.7 289.4</b>
------------------------	---	--	--	--------------------------------	--------------------------------



SW-1, 07 FEB 2013 to 07 MAR 2013

SW-1, 07 FEB 2013 to 07 MAR 2013

