

HI-TACAN Z RWY 16

TACAN HMN Chan 92	APCH CRS 162°	Rwy ldg 12,132 THRE 4084 Arpt Elev 4094
-----------------------------	-------------------------	--

JAL-7 [USAF]

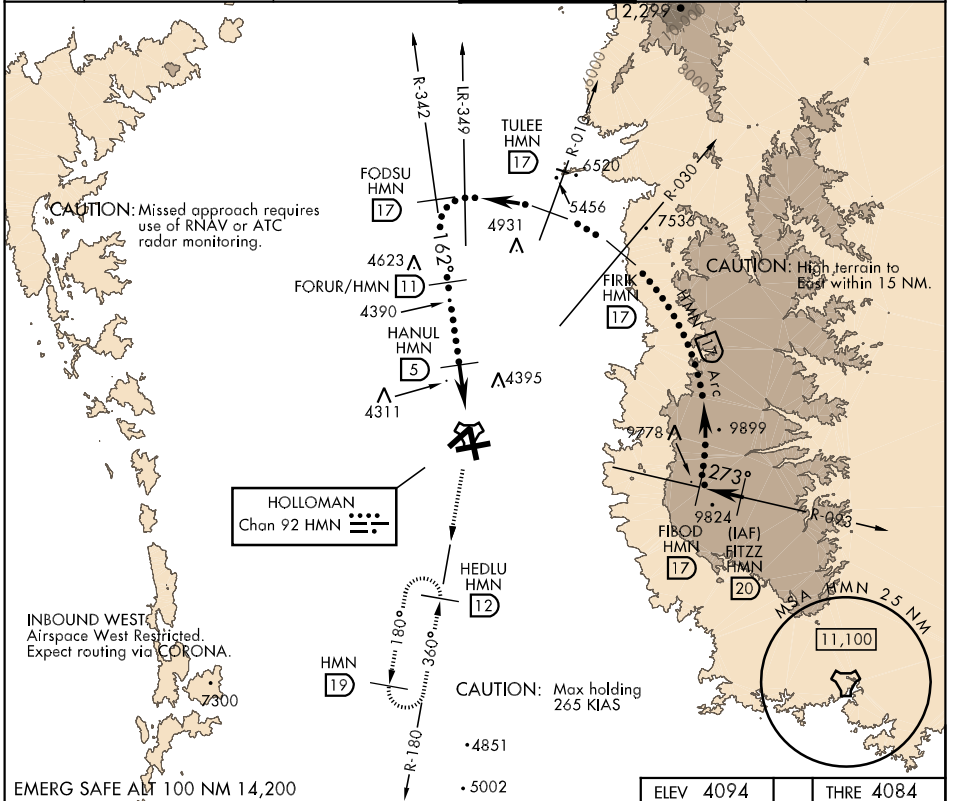
HOLLOMAN AFB (KHMM)

▼ * When ALS inop, increase CAT CDE vis to 1¼ miles.
 ** Circling not authorized W of Rwy 16-34.



MISSED APPROACH: Climb straight ahead to 7000, passing 4800 turn right and intercept HMN R-180 outbound to HEDLU and hold.

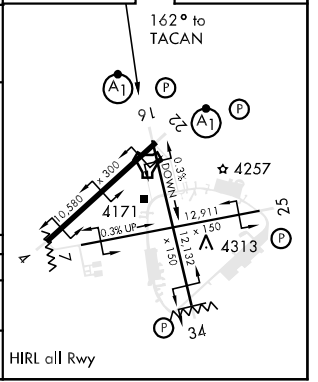
ATIS * 273.5	ALBUQUERQUE CENTER 132.65 257.6	HOLLOMAN APP CON 120.6 269.225	HOLLOMAN TOWER * 119.3 255.9	GND CON 127.05 275.8	CLNC DEL 126.7 289.4
------------------------	---	--	--	--------------------------------	--------------------------------



SW-1, 07 FEB 2013 to 07 MAR 2013

SW-1, 07 FEB 2013 to 07 MAR 2013

EMERG SAFE ALT 100 NM 14,200		ELEV 4094		THRE 4084	
FITZZ R-093 (20)	FIBOD R-030 (17)	FIRK R-010 (17)	TULEE R-016 (17)	FODSU R-342 (17)	FORUR (11)
13,000	13,000	11,000	9,000	7,500	5,600
273°		162°		162° to TACAN	
TCH 51		17 Arc		4.2 NM	
CATEGORY	C	D	E		
S-16 *	4700-1¾		616 (700-1¾)		
CIRCLING **	4700-1¾ 606 (700-1¾)	4700-2 606 (700-2)	4760-2¼ 666 (700-2¼)	HIRL oill Rwy	



HI-TACAN Z RWY 16