

# HI-TACAN Y RWY 22

TACAN HMN Chan 92	APCH CRS 214°	Rwy Idg THRE 10,580 4084 Arprt Elev 4094
----------------------	------------------	---

JAL-7 [USAF]

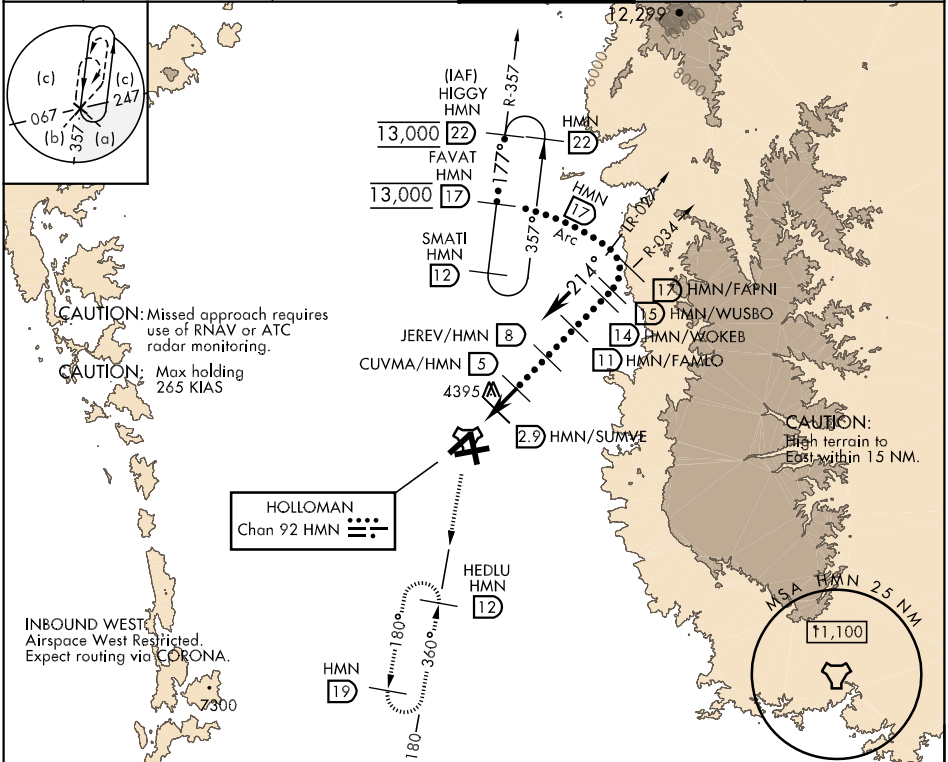
HOLLOMAN AFB (KHMN)

**∇** \*When ALS inop, increase CAT CDE vis to 1½ miles.  
 \*\*Circling not authorized W of Rwy 16-34.



**MISSED APPROACH:** Climb straight ahead to 7000, passing 4800 turn left and intercept HMN R-180 outbound to HEDLU and hold.

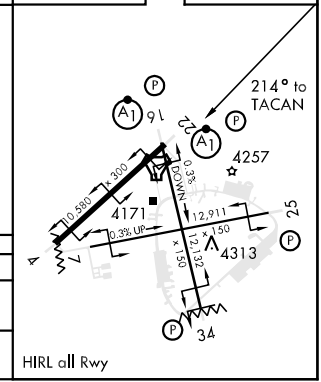
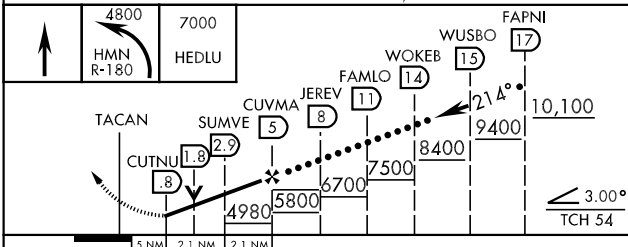
ATIS * 273.5	ALBUQUERQUE CENTER 132.65 257.6	HOLLOMAN APP CON 120.6 269.225	HOLLOMAN TOWER * 119.3 255.9	GND CON 127.05 275.8	CLNC DEL 126.7 289.4
-----------------	------------------------------------	-----------------------------------	---------------------------------	-------------------------	-------------------------



SW-1, 07 FEB 2013 to 07 MAR 2013

SW-1, 07 FEB 2013 to 07 MAR 2013

ELEV 4094	THRE 4084
-----------	-----------



CATEGORY	C	D	E
S-22 *	4620-1	536 (600-1)	(600-1)
CIRCLING **	4640-1½ 546 (600-1½)	4660-2 566 (600-2)	4760-2¼ 666 (700-2¼)

HIRL all Rwy

# HI-TACAN Y RWY 22