

HI-TACAN Y RWY 16

TACAN HMN Chan 92	APCH CRS 162°	Rwy ldg THRE Arpt Elev 12,132 4084 4094
-----------------------------	-------------------------	---

JAL-7 [USAF]

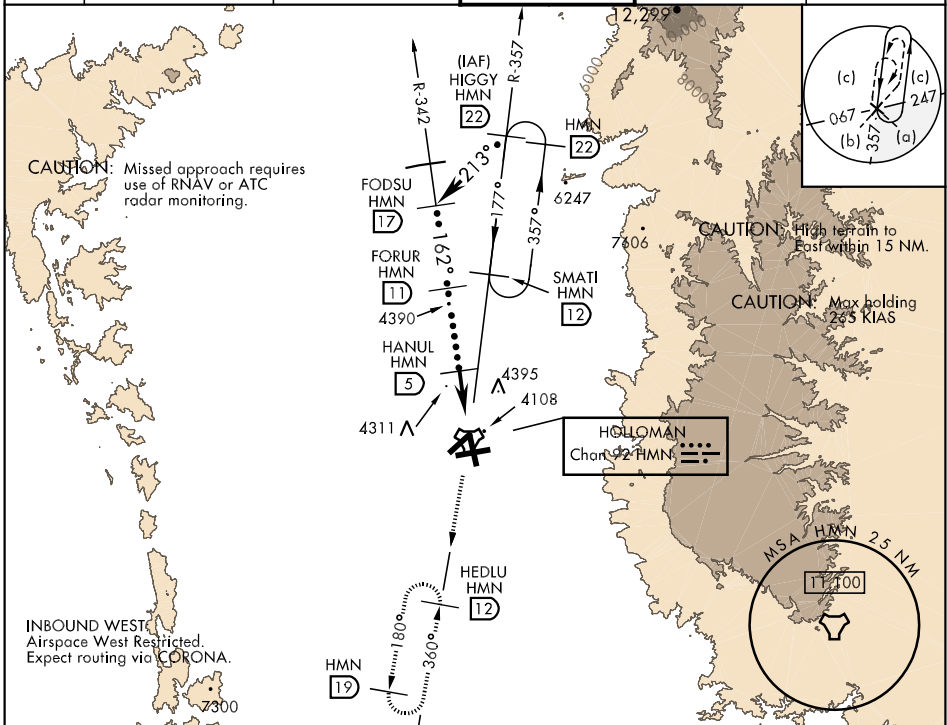
HOLLOMAN AFB (KHMN)

▼ *When ALS inop, increase CAT CDE vis to 1 $\frac{3}{4}$ miles.
**Circling not authorized W of Rwy 16-34.



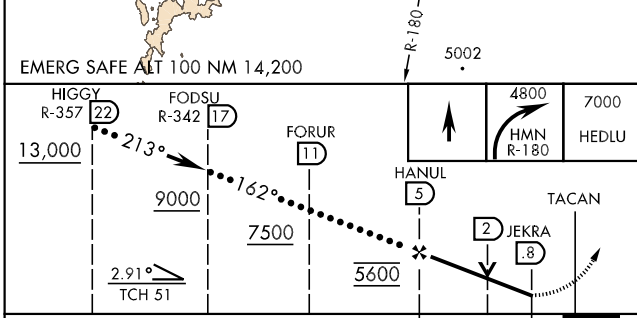
MISSED APPROACH: Climb straight ahead to 7000, passing 4800 turn right and intercept HMN R-180 outbound to HEDLU and hold.

ATIS ★ 273.5	ALBUQUERQUE CENTER 132.65 257.6	HOLLOMAN APP CON 120.6 269.225	HOLLOMAN TOWER ★ 119.3 255.9	GND CON 127.05 275.8	CLNC DEL 126.7 289.4
------------------------	---	--	--	--------------------------------	--------------------------------

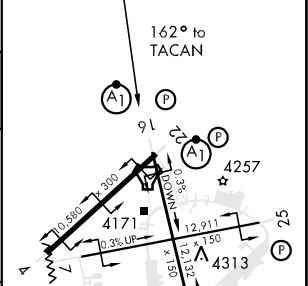


SW-1, 07 FEB 2013 to 07 MAR 2013

SW-1, 07 FEB 2013 to 07 MAR 2013



ELEV 4094	THRE 4084
-----------	-----------



CATEGORY	C	D	E
S-16 *	4700-1 $\frac{3}{4}$	616 (700-1 $\frac{3}{4}$)	
CIRCLING **	4700-1 $\frac{3}{4}$ 606 (700-1 $\frac{3}{4}$)	4700-2 606 (700-2)	4760-2 $\frac{1}{4}$ 666 (700-2 $\frac{1}{4}$)

HIRL all Rwy

HI-TACAN Y RWY 16