

HI-ILS or LOC/DME Y RWY 22

LOC I-HMN 111.7	APCH CRS 218°	Rwy ldg THRE 10,580 4084 Arpt Elev 4094
---------------------------	-------------------------	--

JAL-7 [USAF]

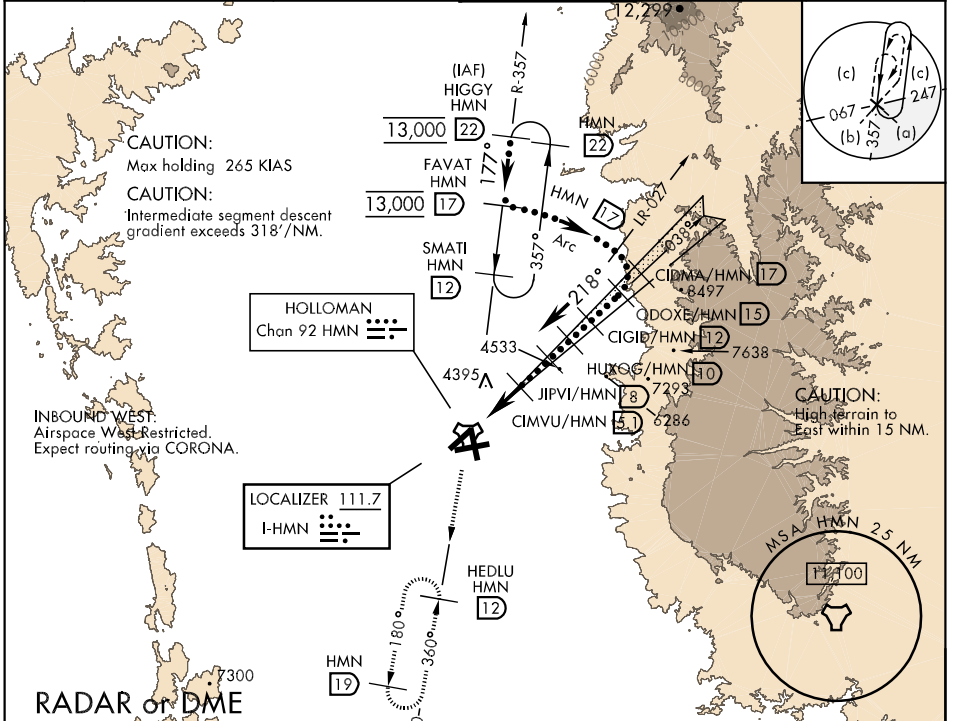
HOLLOMAN AFB (KHMM)

* When ALS inop, increase CAT CDE vis to ¾ mile.
 ** When ALS inop, increase CAT CDE vis to 1½ miles.
 *** Circling not authorized W of Rwy 16-34.



MISSED APPROACH: Climb straight ahead to 7000, passing 4800 turn left and intercept HMN R-180 outbound to HEDLU and hold.

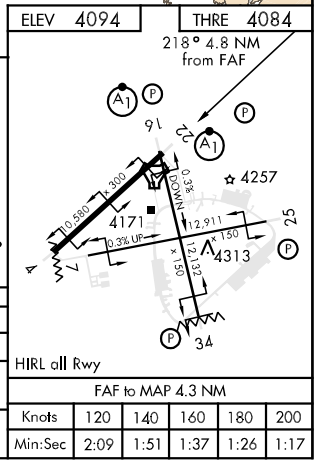
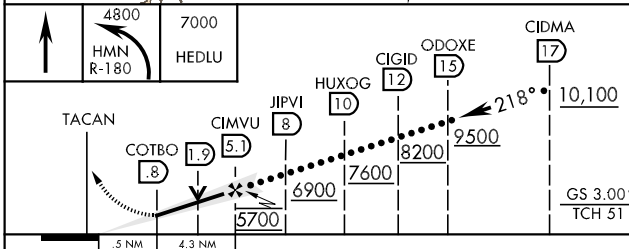
ATIS * 273.5	ALBUQUERQUE CENTER 132.65 257.6	HOLLOMAN APP CON 120.6 269.225	HOLLOMAN TOWER * 119.3 255.9	GND CON 127.05 275.8	CLNC DEL 126.7 289.4
------------------------	---	--	--	--------------------------------	--------------------------------



SW-1, 07 FEB 2013 to 07 MAR 2013

SW-1, 07 FEB 2013 to 07 MAR 2013

EMERG SAFE ALT 100 NM 14,200



CATEGORY	C	D	E
S-ILS 22 *	4284-½	200	(200-½)
S-LOC 22 **	4660-1¼	576	(600-1¼)
CIRCLING ***	4660-1½ 566 (600-1½)	4660-2 566 (600-2)	4760-2¼ 666 (700-2¼)

HI-ILS or LOC/DME Y RWY 22