

HI-ILS or LOC/DME Y RWY 16

LOC I-MUK 108.9	APCH CRS 158°	Rwy Idg THRE 4084 Arpt Elev 4094
---------------------------	-------------------------	--

JAL-7 [USAF]

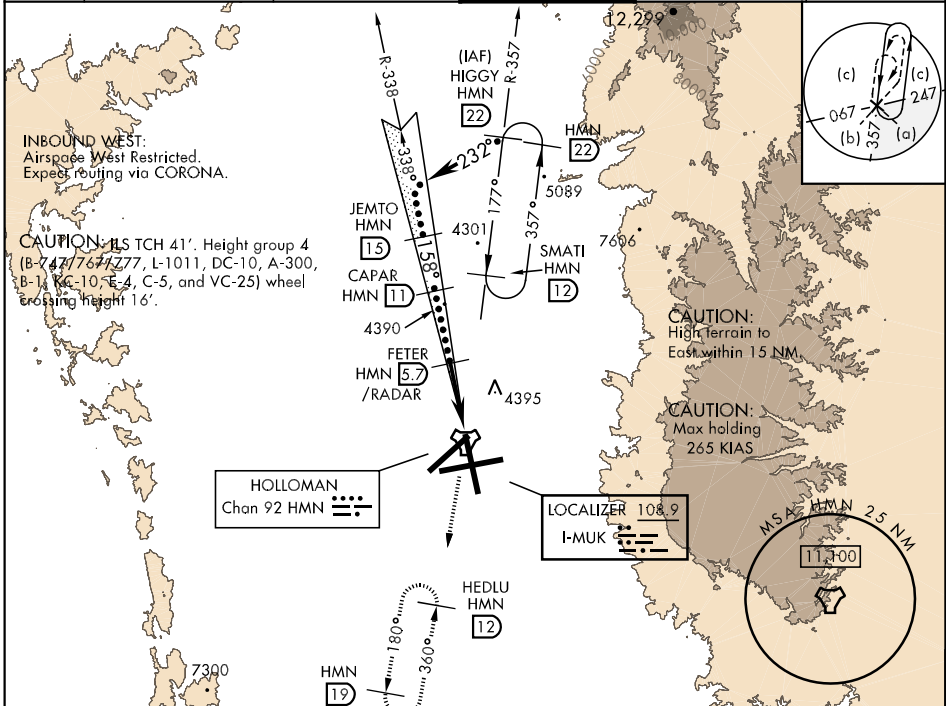
HOLLOMAN AFB (KHMN)

▼ * When ALS inop, increase CAT CDE vis to ¼ mile.
 ** When ALS inop, increase CAT CDE vis to 1¾ miles.
 *** Circling not authorized W of Rwy 16-34.



MISSED APPROACH: Climb straight ahead to 7000, passing 4800 turn right and intercept HMN R-180 outbound to HEDLU and hold.

ATIS ★ 273.5	ALBUQUERQUE CENTER 132.65 257.6	HOLLOMAN APP CON 120.6 269.225	HOLLOMAN TOWER ★ 119.3 255.9	GND CON 127.05 275.8	CLNC DEL 126.7 289.4
------------------------	---	--	--	--------------------------------	--------------------------------

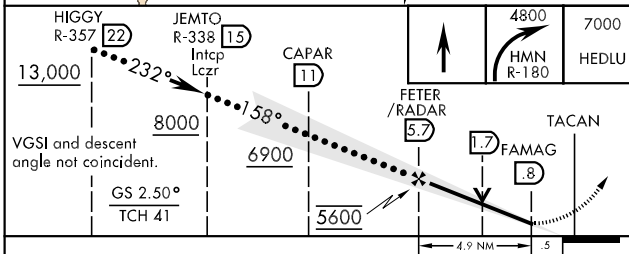


SW-1, 07 FEB 2013 to 07 MAR 2013

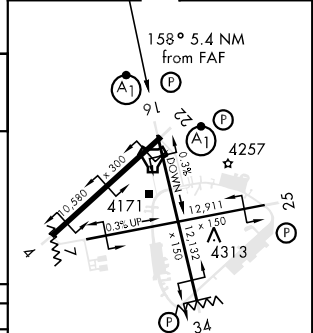
SW-1, 07 FEB 2013 to 07 MAR 2013

RADAR or DME REQUIRED

EMERG SAFE ALT 100 NM 14,200



ELEV 4094	THRE 4084
-----------	-----------



CATEGORY	C	D	E
S-ILS 16*	4284-½	200	(200-½)
S-LOC 16**	4580-1	496	(500-1)
CIRCLING ***	4640-1½ 546 (600-1½)	4660-2 566 (600-2)	4760-2¼ 666 (700-2¼)

HIRL all Rwy					
FAF to MAP 4.9 NM					
Knots	120	140	160	180	200
Min:Sec	2:27	2:06	1:50	1:38	1:28

HI-ILS or LOC/DME Y RWY 16