

# HI-ILS or LOC/DME X RWY 22

LOC I-HMN <b>111.7</b>	APCH CRS <b>218°</b>	Rwy ldg <b>10,580</b> THRE <b>4084</b> Arpt Elev <b>4094</b>
---------------------------	-------------------------	--

JAL-7 [USAF]

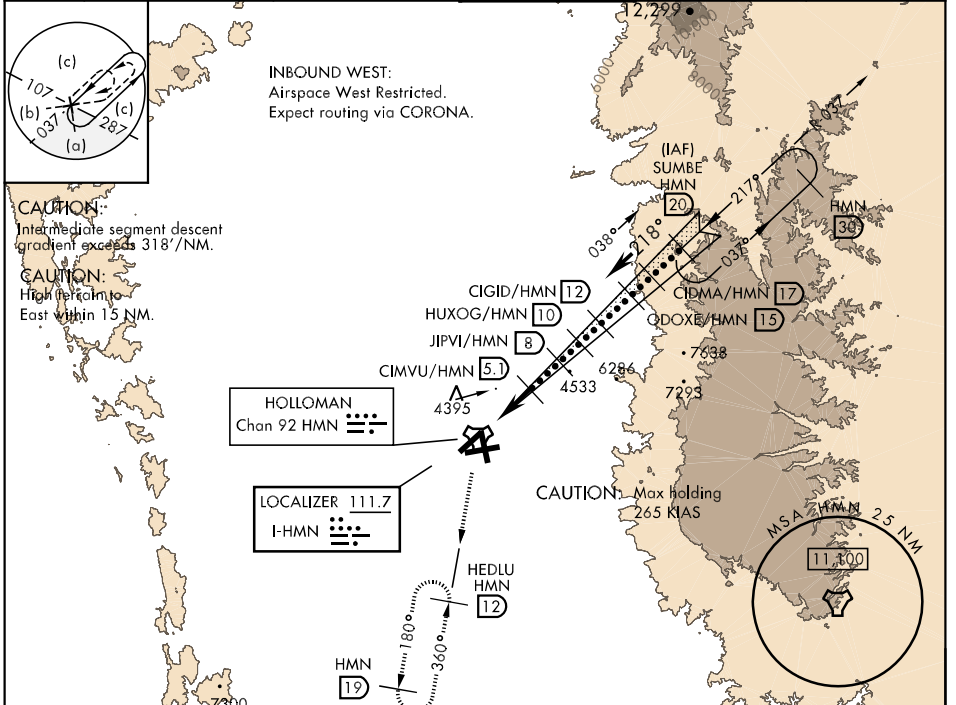
HOLLOMAN AFB (KHMM)

\* When ALS inop, increase CAT CDE vis to ¾ mile.  
 \*\* When ALS inop, increase CAT CDE vis to 1½ miles.  
 \*\*\* Circling not authorized W of Rwy 16-34.

ALSF-1

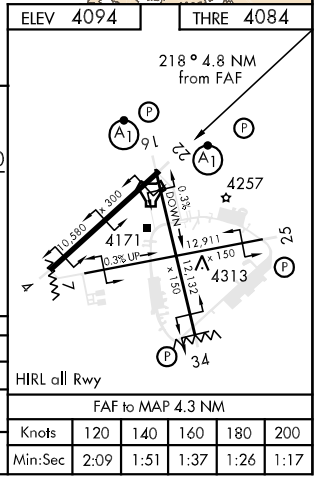
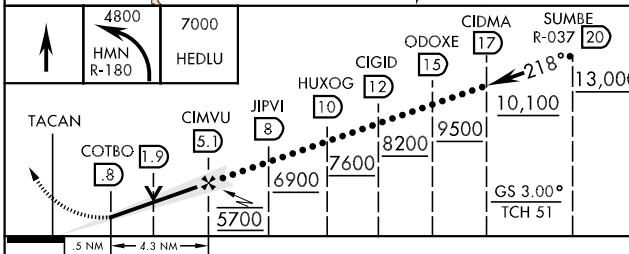
MISSED APPROACH: Climb straight ahead to 7000, passing 4800 turn left and intercept HMN R-180 outbound to HEDLU and hold.

ATIS * <b>273.5</b>	ALBUQUERQUE CENTER <b>132.65 257.6</b>	HOLLOMAN APP CON <b>120.6 269.225</b>	HOLLOMAN TOWER * <b>119.3 255.9</b>	GND CON <b>127.05 275.8</b>	CLNC DEL <b>126.7 289.4</b>
------------------------	---	--	--	--------------------------------	--------------------------------



## RADAR or DME REQUIRED

EMERG SAFE ALT 100 NM 14,200



CATEGORY	C	D	E
S-ILS 22 *	4284-½	200	(200-½)
S-LOC 22 **	4660-1¼	576	(600-1¼)
CIRCLING ***	4660-1½ 566 (600-1½)	4660-2 566 (600-2)	4760-2¼ 666 (700-2¼)

HIRL all Rwy

FAF to MAP 4.3 NM					
Knots	120	140	160	180	200
Min:Sec	2:09	1:51	1:37	1:26	1:17

# HI-ILS or LOC/DME X RWY 22

SW-1, 07 FEB 2013 to 07 MAR 2013

SW-1, 07 FEB 2013 to 07 MAR 2013