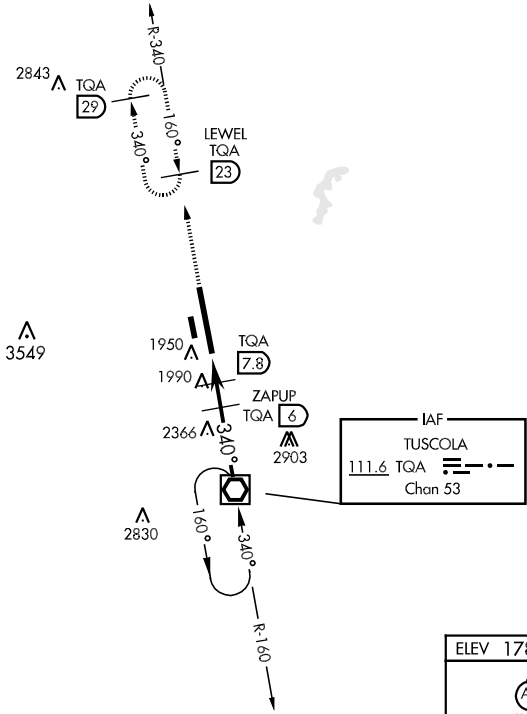


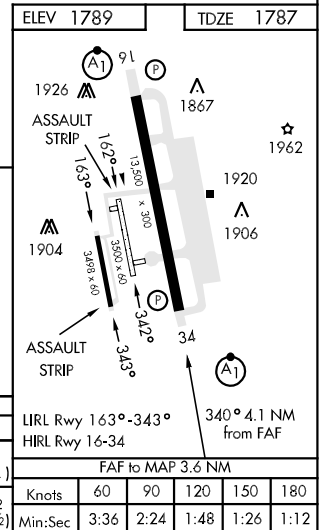
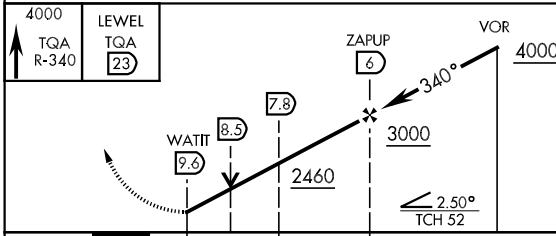
VOR/DME TQA 111.6 Chan 53	APCH CRS 340°	Rwy Idg 13,500 TDZE 1787 Arpt Elev 1789	AL-2 [USAF]	DYESS AFB (KDYS)
* When ALS inop, increase CAT AB RVR to 50 and vis to 1 mile, CAT C RVR to 60 and vis to 1 1/4 miles, CAT D vis to 1 1/2 miles, CAT E vis to 1 3/4 miles. ** Circling to other than Rwy 16 NA.			ALSF-1 	MISSED APPROACH: Climb to 4000 via TQA VOR/DME R-340 to LEVEL and hold.
ATIS ★ 385.7	ABILENE APP CON 125.0 338.3 EAST 127.2 282.3 WEST	DYESS TOWER 133.0 257.675	GND CON 118.35 275.8	ASR



SC-2, 07 FEB 2013 to 07 MAR 2013

SC-2, 07 FEB 2013 to 07 MAR 2013

EMERG SAFE ALT 100 NM 4600



CATEGORY	A		B		C		D		E	
	S-34 *	2260/24	473 (500-1/2)	2260/40	473 (500-3/4)	2260/50	473 (500-1)	2260/60	473 (500-1 1/4)	
CIRCLING **	2340-1	551 (600-1)	2340-1 1/2	551 (600-1 1/2)	2360-2	571 (600-2)	2460-2 1/2	671 (700-2 1/2)		

FAF to MAP 3.6 NM					
Knots	60	90	120	150	180
Min:Sec	3:36	2:24	1:48	1:26	1:12