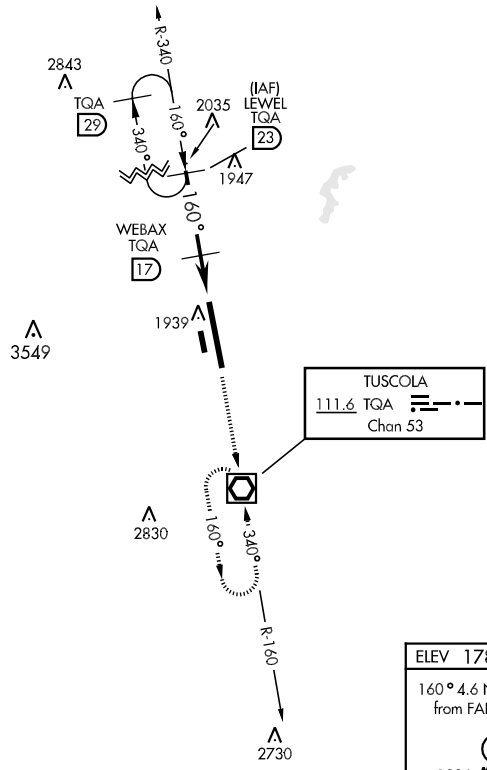
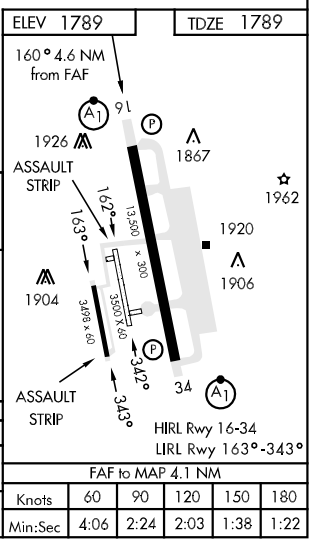
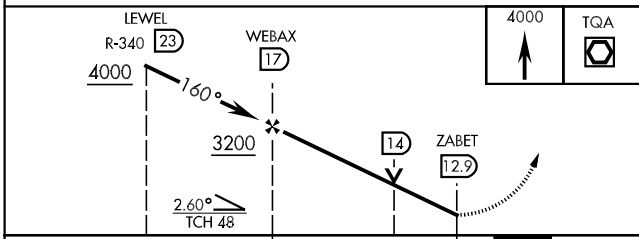


VOR/DME TQA 111.6 Chan 53	APCH CRS 160°	Rwy Idg 13,500 TDZE 1789 Arpt Elev 1789	AL-2 [USAF]	DYESS AFB (KDYS)
* When ALS inop, increase CAT AB RVR to 50 and vis to 1 mile, CAT CD vis to 1½ miles, CAT E vis to 1¾ miles. ** Circling to other than Rwy 34 NA.			ALSF-1 	MISSED APPROACH: Climb and maintain 4000 proceed direct TQA and hold.
ATIS ★ 385.7	ABILENE APP CON 125.0 338.3 EAST 127.2 282.3 WEST	DYESS TOWER 133.0 257.675	GND CON 118.35 275.8	ASR



EMERG SAFE ALT 100 NM 4600



CATEGORY	A	B	C	D	E
S-16 *	2300/24	511 (600-½)	2300/50	511 (600-1)	2300/60 511 (600-1¼)
CIRCLING **	2340-1	551 (600-1)	2340-1½ 551 (600-1½)	2360-2 571 (600-2)	2460-2½ 671 (700-2½)

SC-2, 07 FEB 2013 to 07 MAR 2013

SC-2, 07 FEB 2013 to 07 MAR 2013