

TACAN DYS Chan <b>63</b>	APCH CRS <b>166°</b>	Rwy Idg <b>13,500</b> TDZE <b>1789</b> Arpt Elev <b>1789</b>
-----------------------------	-------------------------	--

AL-2 [USAF]

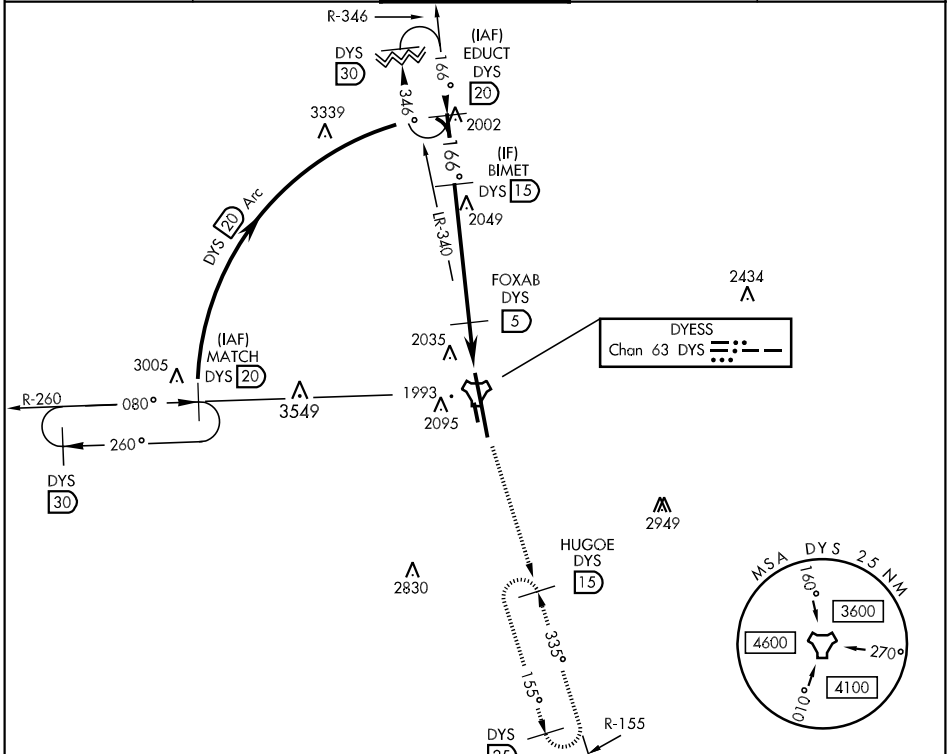
DYESS AFB (KDYS)

\* When ALS inop, increase CAT AB RVR to 55 and vis to 1 mile, CAT CDE vis to 1¼ miles.  
\*\* Circling to other than RWY 34 NA



MISSED APPROACH: Climb to 4000 via DYS TACAN R-155 to HUGOE and hold.

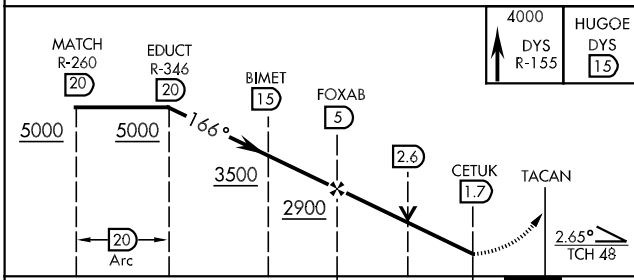
ATIS ★ <b>385.7</b>	ABILENE APP CON <b>125.0 338.3 EAST</b> <b>127.2 282.3 WEST</b>	DYESS TOWER <b>133.0 257.675</b>	GND CON <b>118.35 275.8</b>	ASR
------------------------	---	-------------------------------------	--------------------------------	-----



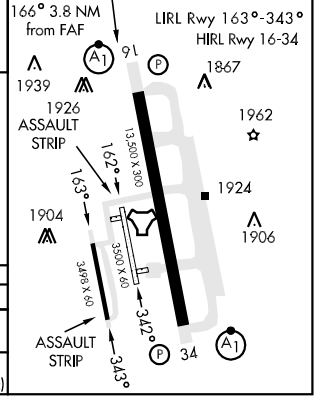
SC-2, 07 FEB 2013 to 07 MAR 2013

SC-2, 07 FEB 2013 to 07 MAR 2013

EMERG SAFE ALT 100 NM 4600



ELEV 1789	TDZE 1789
-----------	-----------



CATEGORY	A	B	C	D	E
S-16 *	2220/24	431 (500-½)	2220/40	431	(500-¾)
CIRCLING **	2300-1	511 (600-1)	2300-1½ 511 (600-1½)	2360-2 571 (600-2)	2460-2½ 671 (700-2½)