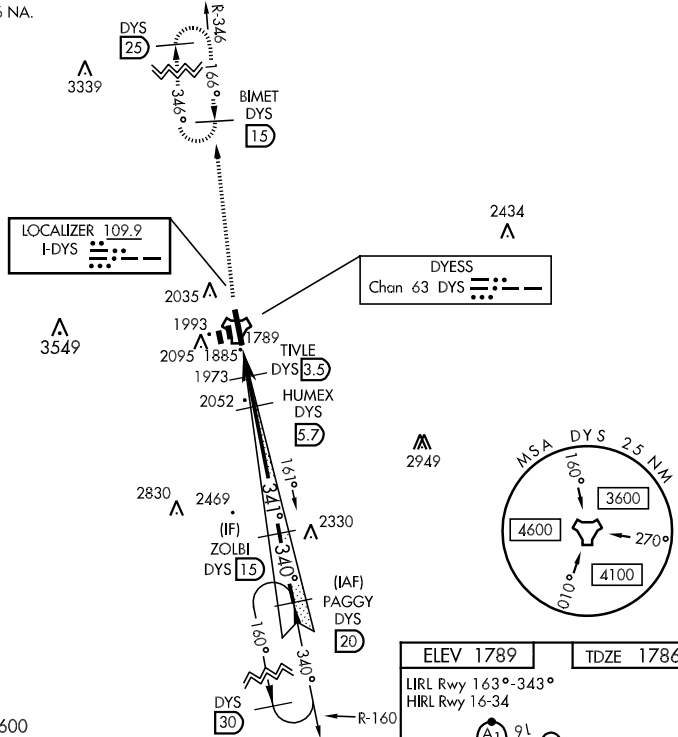


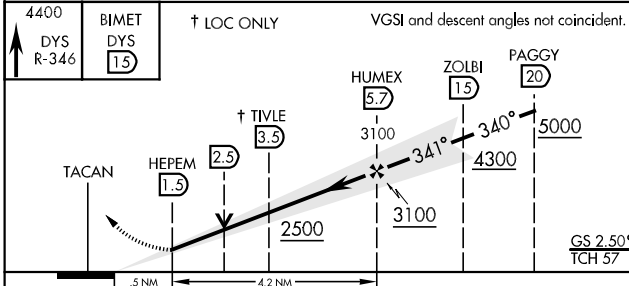
ILS or LOC/DME RWY 34

LOC I-DYS 109.9	APCH CRS 341°	Rwy Idg 13,500 TDZE 1786 Arpt Elev 1789	AL-2 [USAF]	DYESS AFB (KDYS)
* When ALS inop, increase all CAT RVR to 40 and vis to 3/4 mile. ** When ALS inop, increase CAT AB RVR to 55 and vis to 1 mile, CAT CDE vis to 1 3/8 miles.			ALSF-1 	MISSED APPROACH: Climb to 4400 via DYS TACAN R-346 to BIMET and hold.
ATIS ★ 385.7	ABILENE APP CON 125.0 338.3 EAST 127.2 282.3 WEST	DYESS TOWER 133.0 257.675	GND CON 118.35 275.8	ASR

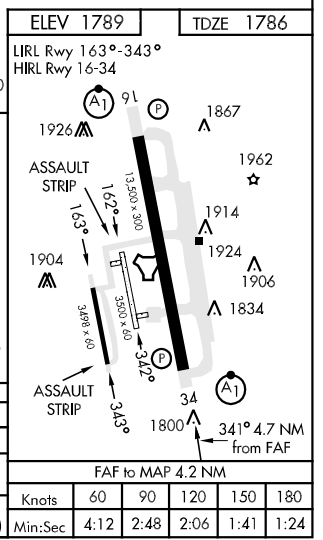
*** Circling to other than Rwy 16 NA.



EMERG SAFE ALT 100 NM 4600



↑ 4400 DYS R-346	BIMET DYS 15	† LOC ONLY	VGSI and descent angles not coincident.		
		† TITILE 3.5	HUMEX 5.7	ZOLBI 15	PAGGY 20
			3100	4300	5000
			341°	340°	GS 2.50° TCH 57'
			.5 NM	4.2 NM	
CATEGORY	A	B	C	D	E
S-ILS 34 *	1986/24		200	(200-1/2)	
S-LOC 34 **	2240/24	454 (500-1/2)	2240/45	454	(500-7/8)
CIRCLING ***	2300-1	511 (600-1)	2300-1 1/2 511 (600-1 1/2)	2360-2 571 (600-2)	2460-2 1/2 671 (700-2 1/2)



SC-2, 07 FEB 2013 to 07 MAR 2013

SC-2, 07 FEB 2013 to 07 MAR 2013

ILS or LOC/DME RWY 34