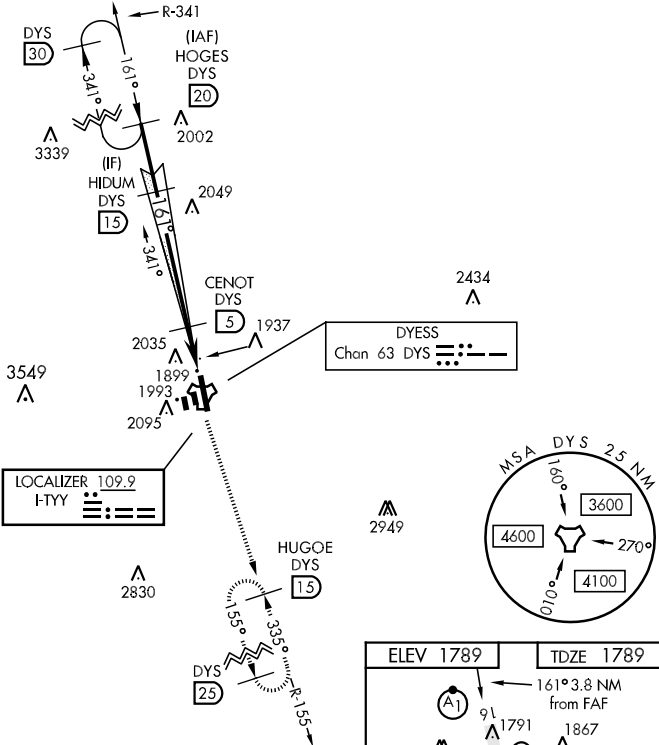
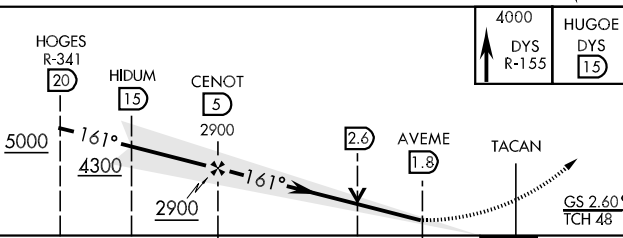


LOC F-TYY 109.9	APCH CRS 161°	Rwy Idg 13,500 TDZE 1789 Arpt Elev 1789	AL-2 [USAF]	DYESS AFB (KDYS)
* When ALS inop, increase all CAT RVR to 40 and vis to 3/4 mile. ** When ALS inop, increase CAT AB RVR to 55 and vis to 1 mile, CAT CDE vis to 1 1/4 miles.			ALSF-1 	MISSED APPROACH: Climb to 4000 via DYS TACAN R-155 to HUGOE and hold.
ATIS ★ 385.7	ABILENE APP CON 125.0 338.3 EAST 127.2 282.3 WEST	DYESS TOWER 133.0 257.675	GND CON 118.35 275.8	ASR

*** Circling to other than Rwy 34 NA.



EMERG SAFE ALT 100 NM 4600



ELEV 1789	TDZE 1789
161° 3.8 NM from FAF 1867 1825 1962 1924 1906 1904 34 91 1791 13,500 x 300 162 163 163 3485 x 60 342 342 342	
LIRL Rwy 163°-343° HIRL Rwy 16-34	
FAF to MAP 3.2 NM	
Knots	60 90 120 150 180
Min:Sec	3:12 2:08 1:36 1:17 1:04

SC-2, 07 FEB 2013 to 07 MAR 2013

SC-2, 07 FEB 2013 to 07 MAR 2013