

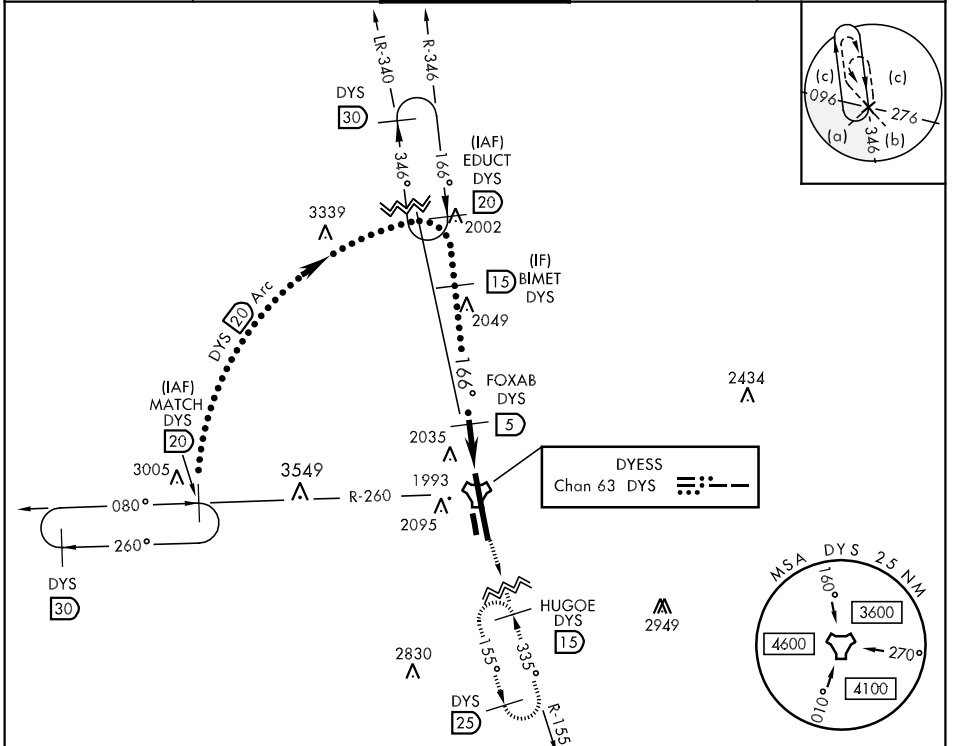
TACAN DYS Chan <b>63</b>	APCH CRS <b>166°</b>	Rwy Idg <b>13,500</b> TDZE <b>1789</b> Arpt Elev <b>1789</b>	JAL-2 [USAF]	DYESS AFB (KDYS)
-----------------------------	-------------------------	--	--------------	------------------

\* When ALS inop, increase CAT CDE vis to 1 1/4 miles.  
 \*\* Circling to other than RWY 34 NA



MISSED APPROACH: Climb to 4000 via  
 DYS TACAN R-155 to HUGOE and hold.

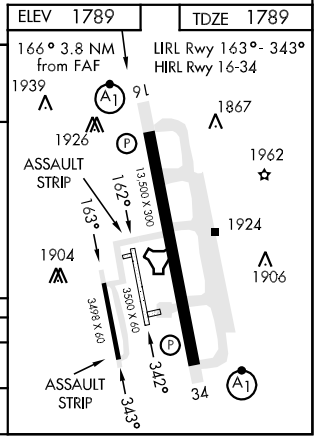
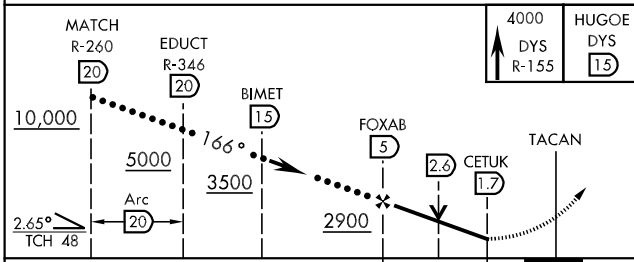
ATIS ★ <b>385.7</b>	ABILENE APP CON <b>125.0 338.3</b> EAST <b>127.2 282.3</b> WEST	DYESS TOWER <b>133.0 257.675</b>	GND CON <b>118.35 275.8</b>	ASR
------------------------	---	-------------------------------------	--------------------------------	-----



SC-2, 07 FEB 2013 to 07 MAR 2013

SC-2, 07 FEB 2013 to 07 MAR 2013

EMERG SAFE ALT 100 NM 4600



CATEGORY	C	D	E
S-16 *	2220/40	431	(500-34)
CIRCLING **	2300-1 1/2 511 (600-1 1/2)	2360-2 571 (600-2)	2460-2 1/2 671 (700-2 1/2)