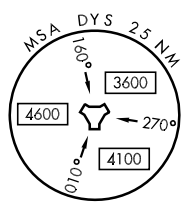
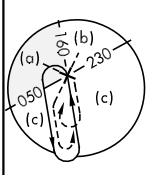
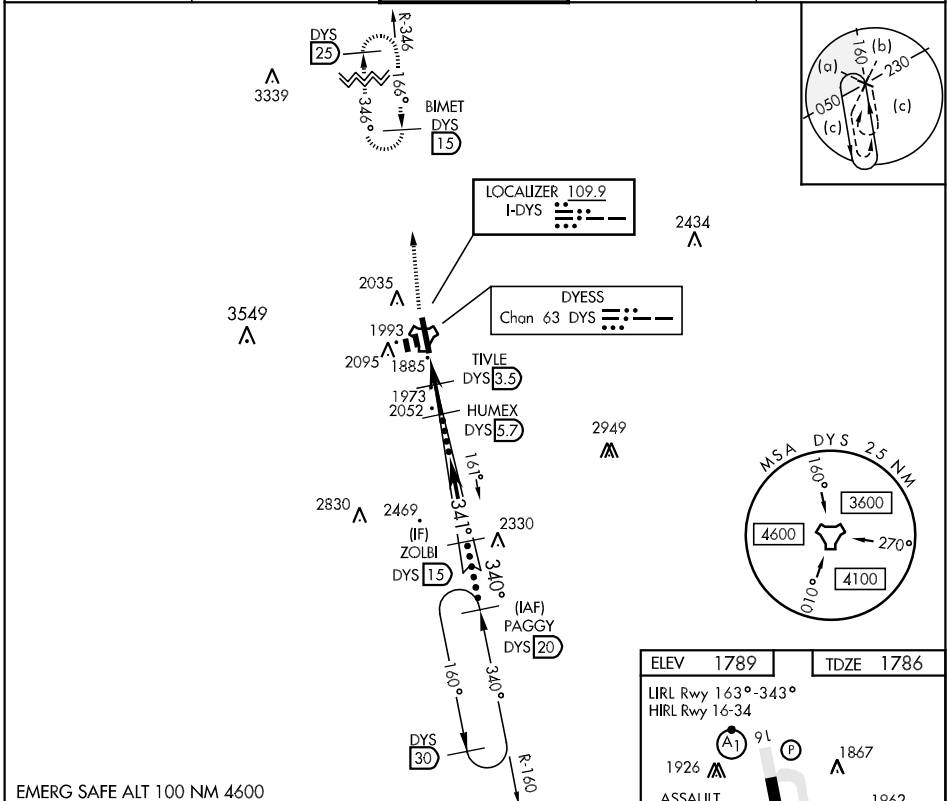


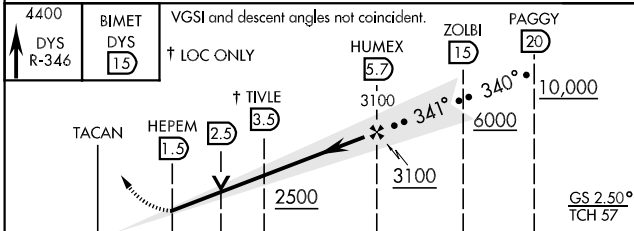
HI-ILS or LOC/DME RWY 34

LOC I-DYS 109.9	APCH CRS 341°	Rwy Idg 13,500 TDZE 1786 Arpt Elev 1789	JAL-2 [USAF]	DYESS AFB (KDYS)
* When ALS inop, increase CAT CDE RVR to 40 and vis to 3/4 mile. ** When ALS inop, increase CAT CDE vis to 1 3/8 miles. *** Circling to other than Rwy 16 NA.			ALSF-1 	MISSED APPROACH: Climb to 4400 via DYS TACAN R-346 to BIMET and hold.

ATIS ★ 385.7	ABILENE APP CON 125.0 338.3 EAST 127.2 282.3 WEST	DYESS TOWER 133.0 257.675	GND CON 118.35 275.8	ASR
------------------------	---	-------------------------------------	--------------------------------	-----



EMERG SAFE ALT 100 NM 4600



ELEV 1789	TDZE 1786
LIRL Rwy 163°-343°	HIRL Rwy 16-34
1926	1867
ASSAULT STRIP	1962
1904	1924
ASSAULT STRIP	1906
1800	1834
34	34
341° 4.7 NM from FAF	
FAF to MAP 4.2 NM	
Knots	120 140 160 180 200
Min:Sec	2:06 1:48 1:35 1:24 1:16

HI-ILS or LOC/DME RWY 34

SC-2, 07 FEB 2013 to 07 MAR 2013

SC-2, 07 FEB 2013 to 07 MAR 2013