

LOC I-TYY 109.9	APCH CRS 161°	Rwy Idg 13,500 TDZE 1789 Arpt Elev 1789
---------------------------	-------------------------	--

JAL-2 [USAF]

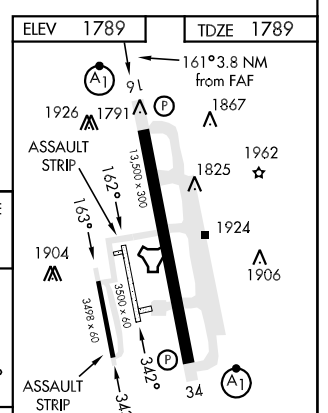
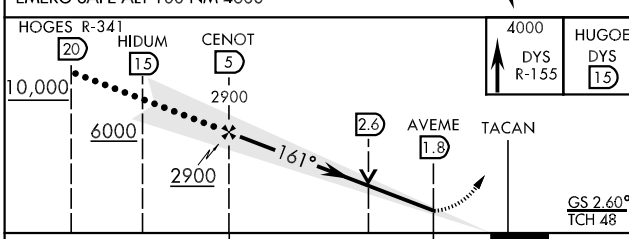
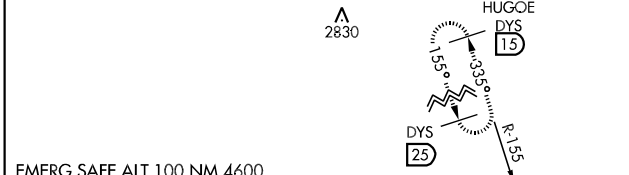
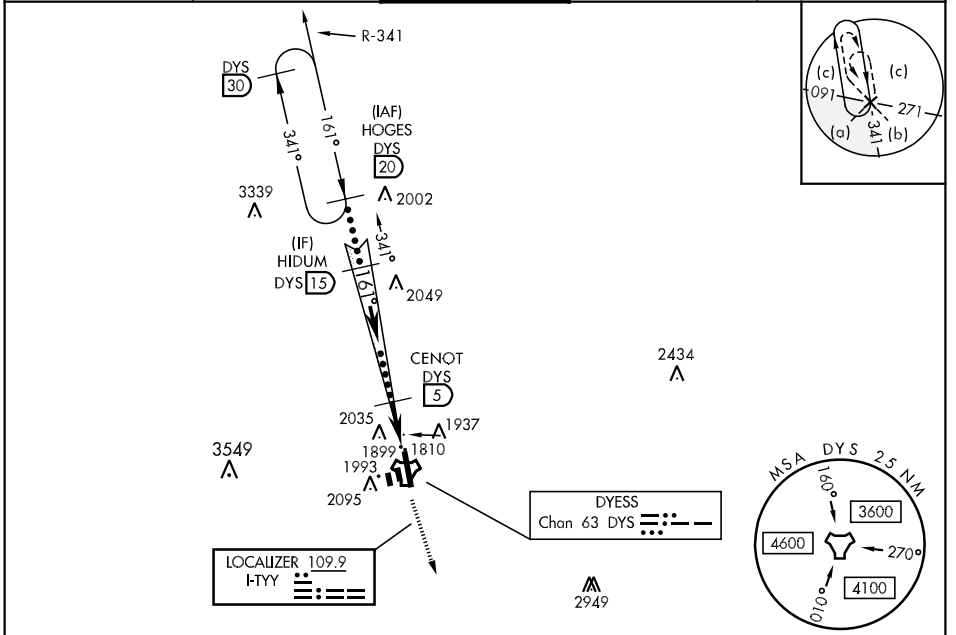
DYESS AFB (KDYS)

* When ALS inop, increase CAT CDE RVR to 40 and vis to ¾ mile.
 ** When ALS inop, increase CAT CDE RVR vis to 1 ½ miles.
 *** Circling to other than Rwy 34 NA.

ALSF-1 (A1)

MISSED APPROACH: Climb to 4000 via DYS TACAN R-155 to HUGOE and hold.

ATIS ★ 385.7	ABILENE APP CON 125.0 338.3 EAST 127.2 282.3 WEST	DYESS TOWER 133.0 257.675	GND CON 118.35 275.8	ASR
------------------------	---	-------------------------------------	--------------------------------	-----



CATEGORY	C	D	E
S-ILS 16 *	1989/24	200	(200-½)
S-LOC 16 **	2220/40	431	(500-¾)
CIRCLING ***	2300-1½ 511 (600-1½)	2360-2 571 (600-2)	2460-2½ 671 (700-2½)

LRL Rwy 163°-343°	FAF to MAP 3.2 NM					
HIRL Rwy 16-34	FAF to MAP 3.2 NM					
	Knots	120	140	160	180	200
	Min:Sec	1:36	1:22	1:12	1:04	0:58

ABILENE, TEXAS 32° 25' N-99° 51' W DYESS AFB (KDYS)

Amtd 1 12320

HI-ILS or LOC/DME RWY 16

SC-2, 07 FEB 2013 to 07 MAR 2013

SC-2, 07 FEB 2013 to 07 MAR 2013