


VOR or GPS-A

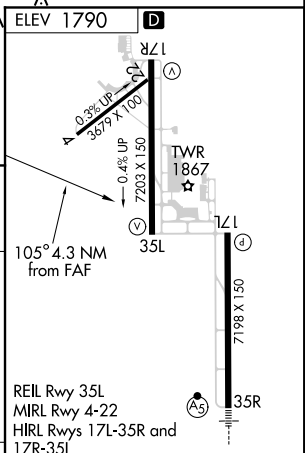
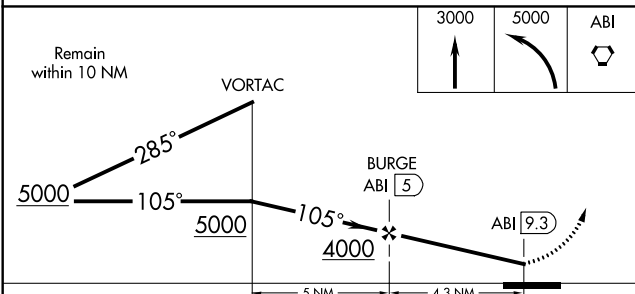
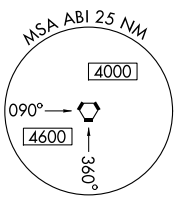
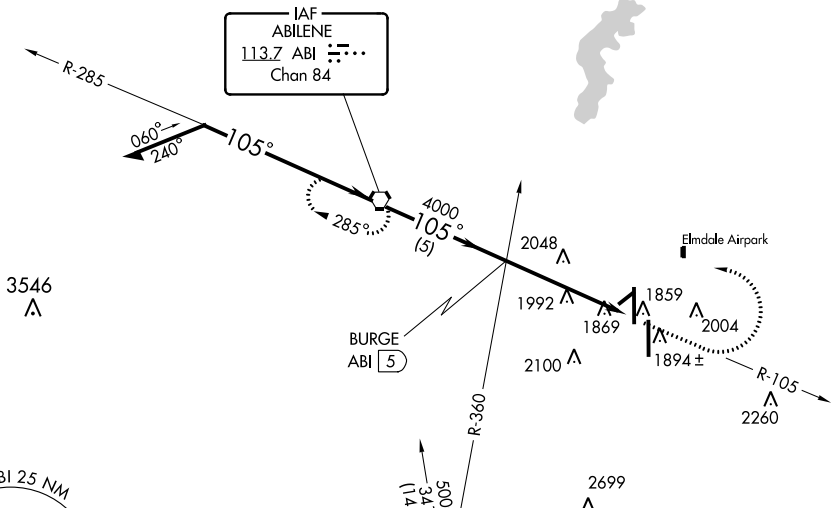
ABILENE RGNL (ABI)

VOR ABI 113.7 Chan 84	APP CRS 105°	Rwy Idg TDZE Apt Elev N/A N/A 1790
---	------------------------	--

 <p>ASR</p>	MISSED APPROACH: Climb to 3000, then dimbing left turn to 5000 direct ABI VORTAC and hold.		
--	--	--	--

ATIS 118.25	ABILENE APP CON 125.0 338.3 (EAST) 127.2 282.3 (WEST)	ABILENE TOWER 120.1 257.8	GND CON 121.7 348.6
-----------------------	---	-------------------------------------	-------------------------------

NoPT for arrivals on ABI VORTAC
airways radial 195° CW 318°.



CATEGORY	A	B	C	D	FAF to MAP 4.3 NM					
CIRCLING	2300-1	510 (600-1)	2360-1½ 570 (600-1½)	2360-2 570 (600-2)	Knots	60	90	120	150	180
					Min:Sec	4:18	2:52	2:09	1:43	1:26

SC-2, 07 FEB 2013 to 07 MAR 2013

SC-2, 07 FEB 2013 to 07 MAR 2013