

WAAS CH 97517 W35A	APP CRS 352°	Rwy ldg TDZE Apt Elev	7198 1776 1791
--	------------------------	-----------------------------	---

RNAV (GPS) RWY 35R

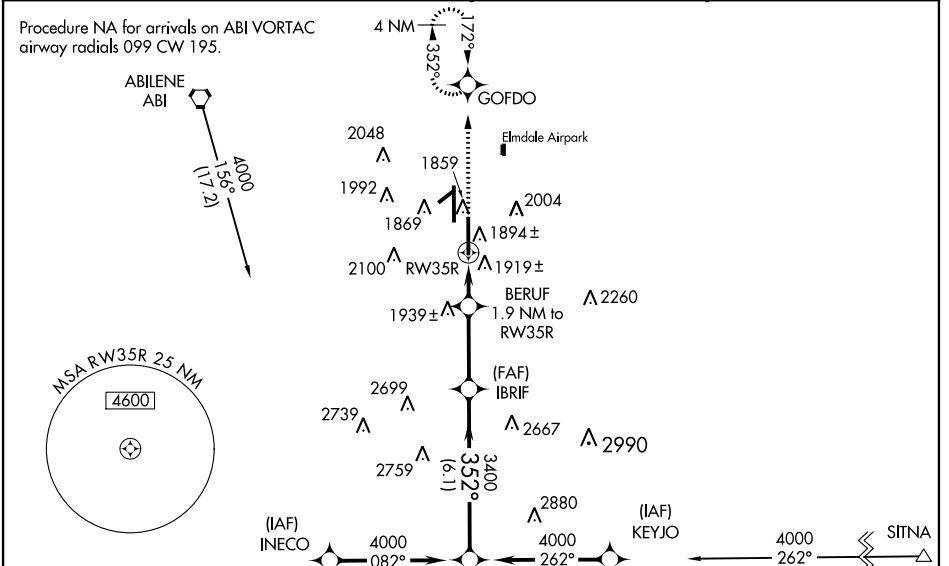
ABILENE RGNL (ABI)

▲ For uncompensated Baro-VNAV systems, LNAV/VNAV NA below -18°C (0°F) or above 45°C (113°F). DME/DME RNP-0.3 NA. When local altimeter setting not received, use Dyess AFB altimeter setting and increase all DA 21 feet and all MDA 40 feet and LNAV Cat C/D and Circling Cat C/E visibility ¼ mile. For inoperative MALSR, increase LPV Cat E visibility to RVR 4000, LNAV/VNAV Cat E visibility to 1½ miles, and LNAV Cat E visibility to 1¾ miles. Baro-VNAV NA when using Dyess AFB altimeter setting. VDP NA with Dyess AFB altimeter setting.

▲ MALSR

MISSED APPROACH: Climb to 4000 direct GOFDO and hold, continue climb-in-hold to 4000.

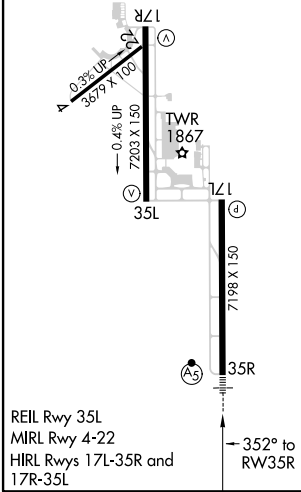
ATIS 118.25	ABILENE APP CON 125.0 338.3 (EAST) 127.2 282.3 (WEST)	ABILENE TOWER 120.1 257.8	GND CON 121.7 348.6
-----------------------	---	-------------------------------------	-------------------------------



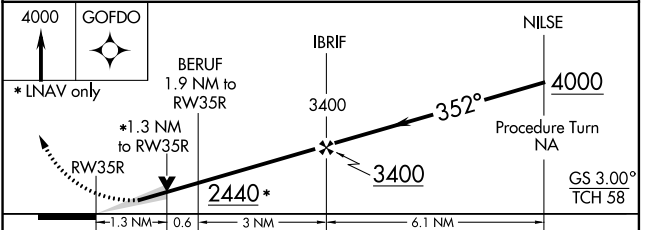
SC-2, 07 FEB 2013 to 07 MAR 2013

SC-2, 07 FEB 2013 to 07 MAR 2013

ELEV 1791	D	TDZE 1776
-----------	----------	-----------



Procedure NA for arrivals at SITNA on V94 Eastbound.



CATEGORY	A	B	C	D	E
LPV DA	1976/24 200 (200-½)				
LNAV/VNAV DA	2189/50 413 (500-1)				
LNAV MDA	2260/24	484 (500-½)	2260/40 484 (500-¾)	2260/50 484 (500-1)	2260/60 484 (500-1½)
CIRCLING	2260-1	469 (500-1)	2360-1½ 569 (600-1½)	2360-2 569 (600-2)	2520-2½ 729 (800-2½)