

WAAS CH 50317 W17A	APP CRS 172°	Rwy ldg TDZE 1791 Apt Elev 1791
--	------------------------	---

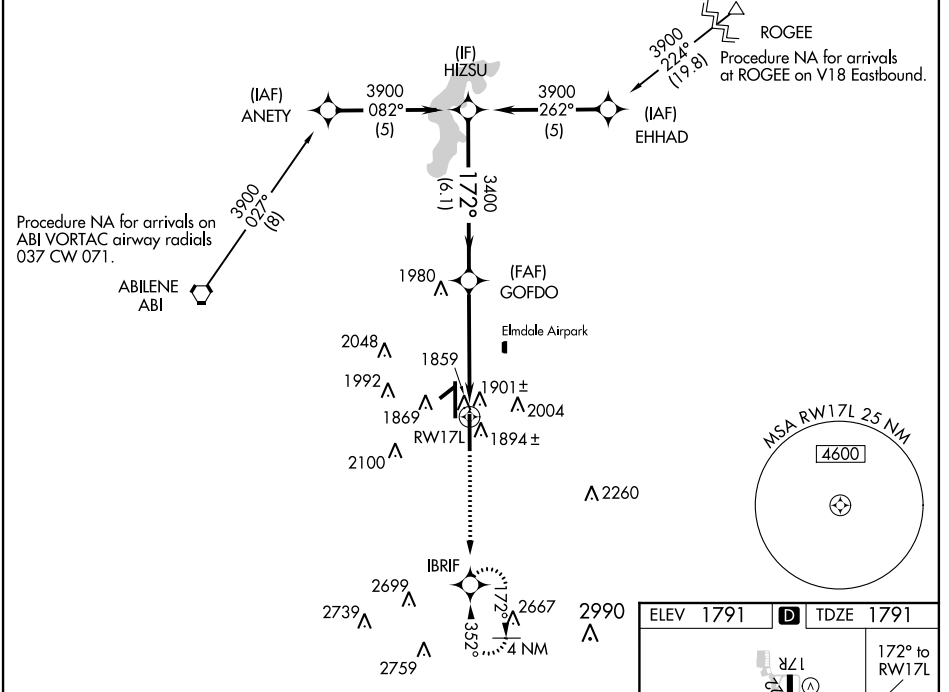
RNAV (GPS) RWY 17L

ABILENE RGNL (ABI)

⚠ For uncompensated Baro-VNAV systems, LNAV/VNAV NA below -18°C (0°F) or above 45°C (113°F). DME/DME RNP-0.3 NA. Visibility reduction by helicopters NA. When local altimeter setting not received, use Dyess AFB altimeter setting and increase all DA 21 feet and all MDA 40 feet and LPV all Cats, LNAV/VNAV all Cats, LNAV Cat C/E, and Circling Cat C/E visibility ¼ mile. Baro-VNAV NA when using Dyess AFB altimeter setting. VDP NA with Dyess AFB altimeter setting.

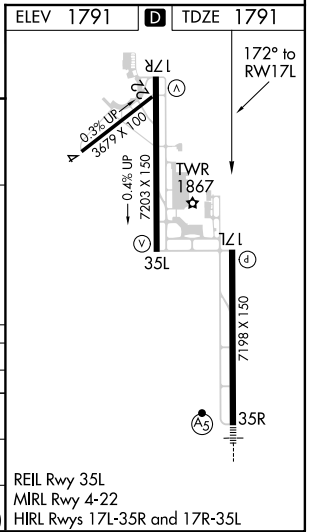
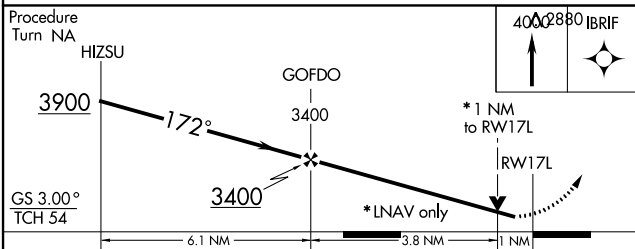
MISSED APPROACH: Climb to 4000 direct IBRIF and hold, continue climb-in-hold to 4000.

ATIS 118.25	ABILENE APP CON 125.0 338.3 (EAST) 127.2 282.3 (WEST)	ABILENE TOWER 120.1 257.8	GND CON 121.7 348.6
-----------------------	---	-------------------------------------	-------------------------------



SC-2, 07 FEB 2013 to 07 MAR 2013

SC-2, 07 FEB 2013 to 07 MAR 2013



CATEGORY	A	B	C	D	E
LPV DA	2041-3/4 250 (300-3/4)				
LNAV/VNAV DA	2171-1 1/4 380 (400-1 1/4)				
LNAV MDA	2160-1 369 (400-1)		2160-1 1/4 369 (400-1 1/4)		
CIRCLING	2260-1 469 (500-1)	2360-1 1/2 569 (600-1 1/2)	2360-2 569 (600-2)	2520-2 1/2 729 (800-2 1/2)	