

ABILENE, TEXAS

AL-1 (FAA)

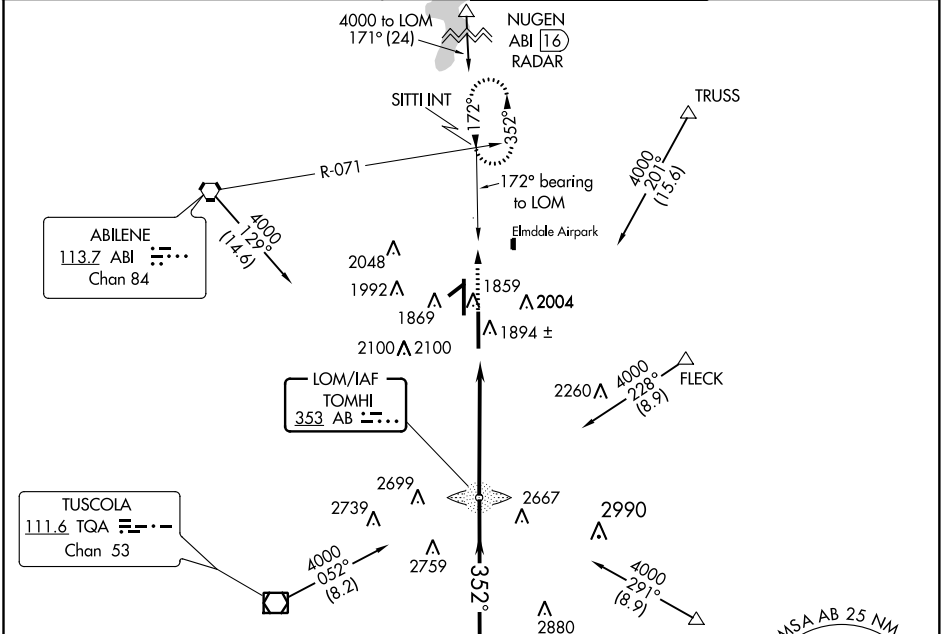
NDB RWY 35R

ABILENE RGNL (ABI)

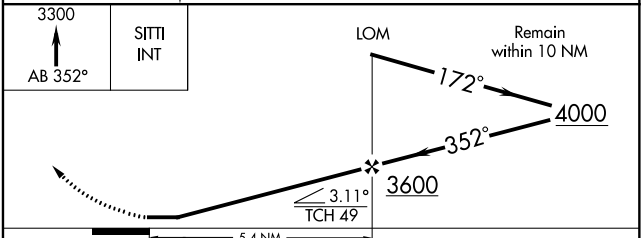
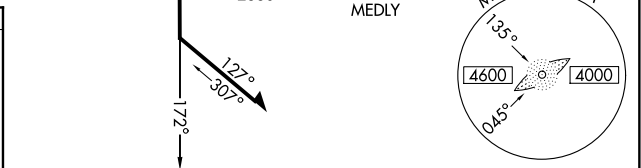
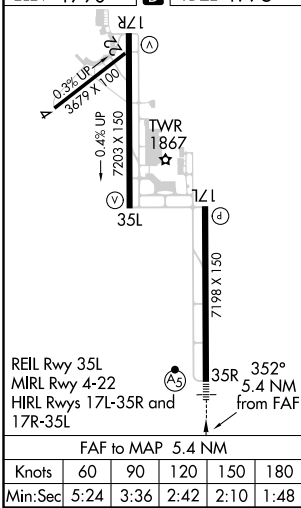
LOM AB 353	APP CRS 352°	Rwy Idg 7198
		TDZE 1775
		Apt Elev 1790

ASR	MALS	MISSED APPROACH: Climb to 3300 via AB bearing 352° to SITTI INT and hold.
-----	------	---

ATIS 118.25	ABILENE APP CON 125.0 338.3 (EAST) 127.2 282.3 (WEST)	ABILENE TOWER 120.1 257.8	GND CON 121.7 348.6
-----------------------	---	-------------------------------------	-------------------------------



ELEV 1790 TDZE 1775



CATEGORY	A	B	C	D
S-35R	2320/40	545 (600-¾)	2320/50 545 (600-1)	2320-1½ 545 (600-1½)
CIRCLING	2320-1	530 (600-1)	2360-1½ 570 (600-1½)	2360-2 570 (600-2)

ABILENE, TEXAS
Amdt 5D 12320

32°25'N-99°41'W

ABILENE RGNL (ABI) NDB RWY 35R

SC-2, 07 FEB 2013 to 07 MAR 2013

SC-2, 07 FEB 2013 to 07 MAR 2013